



School Office
Friday Flyer!



All Saints'

family, faith, flourish

"God gave you that gift... Now let it flourish, as a small flame grows into a fire" (2 Timothy 1:6 - 1CB)

School Office Friday Flyer!

REMINDERS FOR THE WEEKS AHEAD

Monday 16th June	<ul style="list-style-type: none"> • Infant Parent Information Session about the teaching of RSE in school – All Saints Infant School at 5.30pm • Y1 & 2 Singing After School Club (finishes 4.15pm) • Infants Qualitas After School Football Club • Y6 Visit from Y7 Highfields Team • Y4 & 6 Homework Hangout
Tuesday 17th June	<ul style="list-style-type: none"> • Y1 & 2 Homework After School Clubs (finishes 4pm) • Y2 Gardening After School Club (finishes 4.15pm) • Y6 Swimming • Y6 Maths Club – LAST SESSION • Juniors Qualitas Rounders After School Club • Matlock and Dales Football Fixture v St Joseph's
Wednesday 18th June	<ul style="list-style-type: none"> • Y1 & Y2 After School Craft Club (Finishes 4.15pm) • Forest School – Oak Class • Y3&5 Homework Hangout • Juniors Qualitas Football After School
Thursday 19th June	<ul style="list-style-type: none"> • Infants Qualitas Cricket After School Club • Y6 Lady Manners Transition Day • Junior Parent Information Session about the teaching of RSE in school – All Saints Junior School at 5.30pm
Friday 20th June	<ul style="list-style-type: none"> • Y5/6 Sports Day <i>The reception gates will open to parents at 1.10pm. Sports day will then commence at 1.15 and finish at 2.30pm. Drinks and Ice pops will be available to buy at sports day for parents and carers, please bring coins. If you are unable to attend, you are welcome to send 50p with your child to enable them to purchase an ice pop at the end of their events.</i> • Juniors Qualitas Tennis After School Club

Monday 23 th June	<ul style="list-style-type: none"> • Y1 & 2 Singing After School Club (finishes 4.15pm) • Infants Qualitas After School Football Club • Y4 & 6 Homework Hangout
Tuesday 24 th June	<ul style="list-style-type: none"> • Y1 & 2 Homework After School Clubs (finishes 4pm) • Y2 Gardening After School Club (finishes 4.15pm) • Y6 Swimming • Juniors Qualitas Rounders After School Club
Wednesday 25 th June	<ul style="list-style-type: none"> • Y1 & Y2 After School Craft Club (Finishes 4.15pm) • Forest School – Oak Class • Y3&5 Homework Hangout • Juniors Qualitas Football After School
Thursday 26 th June	<ul style="list-style-type: none"> • Infants Qualitas Cricket After School Club
Friday 27 th June	<p style="text-align: center;">PTFA Summer Fayre</p> <p style="text-align: center;">Entrance to the Summer Fayre will be through the Reception gates from 4pm. There will be no access through the Morledge gate.</p> <p style="text-align: center;"><i>Children are welcome to wear their own clothes on the day for a donation of £1.</i></p> <ul style="list-style-type: none"> • Juniors Qualitas Tennis After School Club - CANCELLED DUE TO SUMMER FAYRE
<p>Please note:</p> <p style="text-align: center;">You will have a received a Parentmail if your child is involved in any of the after school clubs.</p>	

Please do not hesitate to contact us on 01629 58293 or by email info@allsaintsfed.derbyshire.sch.uk with any questions or queries

FURTHER DATES FOR YOUR DIARY

	INFANTS	JUNIORS
Friday 27 th June	PTFA Summer Fayre	
Tuesday 1 st July	<ul style="list-style-type: none"> Y2 Transition Afternoon. <i>Please pick up your child from the Junior school at 3:30pm.</i> 	<ul style="list-style-type: none"> Y6 Highfields Transition Day Y6 Parents/Carers invited to meet the teachers at Highfields in the evening – 6pm – 7.15pm.
Wednesday 2 nd July		<ul style="list-style-type: none"> Y6 Residential Trip to Walesby
Thursday 3 rd July		<ul style="list-style-type: none"> Y6 Residential Trip to Walesby
Friday 4 th July		<ul style="list-style-type: none"> Y6 Residential Trip to Walesby
Monday 7 th July		<ul style="list-style-type: none"> Y4 Djembe Drums Performance – Larch Class – All Saints Church at 2.15pm
Wednesday 9 th July	<ul style="list-style-type: none"> Y2 Transition Morning. <i>Please drop your child off at the Junior school between 8.40am and 8.55am.</i> 	<ul style="list-style-type: none"> Y5 & Y6 Visit tHighfields Musical Performance – <i>Children to be in school for 8.15am for early registration please.</i> Y6 Anthony Gell Transition Day
Monday 14 th July		<ul style="list-style-type: none"> Y4 Djembe Drums Performance – Rowan Class – All Saints Church at 2.15pm
Tuesday 15 th July	<ul style="list-style-type: none"> Y2 Performance – 2pm 	
Wednesday 16 th July	<ul style="list-style-type: none"> Y2 Performance – 6pm 	
Monday 21 st July		<ul style="list-style-type: none"> Y6 Performance at 6pm
Tuesday 22 nd July		<ul style="list-style-type: none"> Y6 Performance at 2pm Y6 Performance at 6pm
Wednesday 23 rd July	<ul style="list-style-type: none"> Y2 Leavers Service – All Saints Church – 9.30am EYFS – Teddy Bears Picnic 	<ul style="list-style-type: none"> Y6 ‘Party on the Field’ – 6pm – 9.15pm – Dress code: Festival vibes
Thursday 24 th July		<ul style="list-style-type: none"> Y6 Leavers Service – All Saints’ Church – 9.30am
Thursday 24 th July	LAST DAY OF TERM BEFORE SUMMER BREAK	

Club Timings: -

Maths Clubs – 3.30pm – 4.15pm

Tutoring Groups – 3.30pm – 4.30pm

Homework Clubs – 3.30pm – 4.15pm

Art and Craft Clubs – 3.30pm – 4.15pm

Singing Club – 3.30pm – 4.15pm

Qualitas Clubs – 3.30pm – 4.30p

	INSET DAYS – 2025-2026
Thursday 4 th September	INSET – School Closed for staff training
Friday 5 th September	INSET – School Closed for staff training
Monday 24 th November	INSET – School Closed for staff training
Monday 23 rd February	INSET – School Closed for staff training
Monday 1 st June	INSET – School Closed for staff training

Other News: -

- ❖ **PTFA Summer Fayre** - Get ready for a fun-filled day at our Summer Fayre on Friday 27th June!

There will be plenty of exciting stalls and activities, with items priced between **30p and £1**. To help things run smoothly, please try to bring **coins and small change**, as we have limited change available on the day.

On the day it is **Non-Uniform Day**. To help support the event, pupils are invited to come to school in their **own clothes** on the day for a **£1 donation**. All proceeds will go towards making the fayre a fantastic experience for everyone!

Don't forget to check out the attached poster for more details 😊

- ❖ **PTFA Tea Towels** – As you will now be aware, the children have recently drawn a picture of themselves in school for a class tea towel and other merchandise. Please see the poster below with instructions on how you can now purchase this. **Please note that the ‘Early Bird’ discount is available for 2 weeks only!**
- ❖ **Derbyshire County Council Household Support Fund** - As part of the Government’s Household Support Fund Scheme, Derbyshire County Council is distributing funding to household’s struggling to pay for food, energy, and essential living costs. As part of the scheme, the Council will again be distributing grocery vouchers. Information about who is eligible for the vouchers is available on the website and distribution will start in late June 2025. We will update the website when all vouchers have been distributed and provide details of what parents and carers should do if they have not received their voucher. Full details about the scheme and the support available for those experiencing financial hardship is available on our website at www.derbyshire.gov.uk/householdsupportfund
- ❖ **Water Bottles**
If your child has a packed lunch, can you please make sure a drink/water bottle is included. All children should also be provided with a water bottle to use in their classroom during the school day please, especially now as we are heading into the warmer weather.
- ❖ **Free School Meals**
If you think that your child is eligible for free school meals, please apply as soon as possible so you do not miss out on the protection that you may be able to secure, we recommended parents apply [using the digital portal](#).

What Parents & Educators Need to Know about GENERATIVE AI SAFETY

Generative AI tools – such as ChatGPT – are now commonly used by children. In fact, 3 in 4 pupils in the 2024 Annual Literacy Survey reported using generative AI, up from just 2 in 5 the previous year. While these tools can boost learning and creativity, they also raise concerns around misinformation, privacy and overuse. This guide explores the key risks and how to support safe use.

WHAT ARE THE RISKS?

MISINFORMATION AND ACCURACY



Generative AI can sometimes produce false or misleading content. Children – and even adults – may assume the information is accurate and trustworthy. This can affect learning and understanding of important topics. It's vital to teach children to critically assess all information, even when it comes from AI.

EXPOSURE TO INAPPROPRIATE CONTENT

Because generative AI is trained on vast datasets from across the internet, there is a chance it may occasionally generate harmful or inappropriate content. Without supervision, children could encounter disturbing or unsuitable material. Active monitoring and clear usage boundaries can help reduce this risk.

PRIVACY AND DATA SECURITY

Some AI tools ask for personal details or store users' interactions. If privacy settings are not correctly configured, children's personal data could be exposed or misused. Teaching good digital hygiene and setting strong privacy controls is essential for protecting children online.

REDUCED CRITICAL THINKING



Relying too heavily on AI-generated responses may reduce children's willingness to think independently. If they consistently use AI to solve problems or complete tasks, it could impact their ability to reason, analyse and form their own ideas. Encouraging thoughtful reflection is key.

DIGITAL DEPENDENCY



Regular use of generative AI can contribute to increased screen time and less real-world interaction. If left unmanaged, it may affect physical activity levels, sleep, and social development. Striking a healthy balance between online and offline activities is important for wellbeing.

UNCLEAR ETHICAL BOUNDARIES



Children may not fully understand the ethical implications of using AI to complete homework or creative tasks. This can lead to unintentional plagiarism or dishonest academic practices. Conversations around responsible use and academic honesty are crucial.

Advice for Parents & Educators

ESTABLISH CLEAR GUIDELINES

Set clear, age-appropriate rules for when and how generative AI can be used. Reinforce these regularly to help children develop a healthy, respectful and informed relationship with the technology.



ENCOURAGE CRITICAL EVALUATION

Help children to question the accuracy of AI-generated information and seek out additional trusted sources. This builds essential digital literacy skills and supports better decision-making.



PROMOTE ACTIVE SUPERVISION

Keep an eye on how the children in your care use AI tools. Check in regularly to ensure they're using them appropriately and be ready to step in if something doesn't feel right.



ENHANCE PRIVACY AWARENESS

Talk to children about the importance of keeping personal information private. Make sure privacy settings are in place and explain how data shared with AI tools could be used.



Meet Our Expert

Brendan O'Keefe, Deputy Headmaster and Director of Digital Strategy at Eaton House Schools, has extensive expertise in digital safety, safeguarding, and generative AI in education. As an author and speaker on digital literacy and online safety for institutions such as The National College, Brendan guides parents and educators in creating safe digital learning environments.



#WakeUpWednesday

The National College



SUMMER FAYRE

Friday 27th June
4 - 6 pm



ALL SAINTS
FEDERATION
PTFA



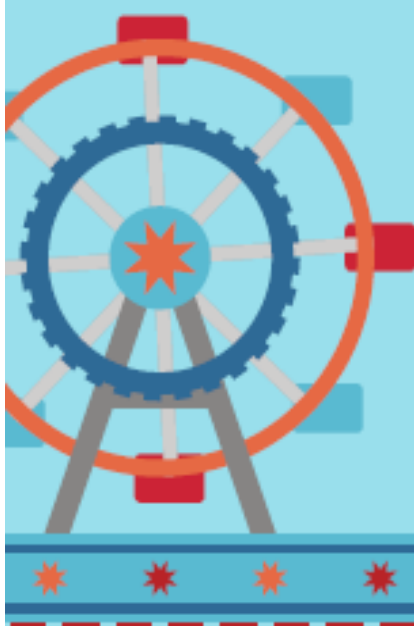
ALL SAINTS JUNIOR SCHOOL



FREE ENTRY

JOIN US FOR LOTS OF FUN!

- Facepaint •
 - Glitter Tattoos •
 - Penalty Shootout •
 - Treasure Hunt •
 - Hook-a-duck •
 - Refreshments •
 - Games •
 - Prizes •
- and much more!



ALL SAINTS' CE FEDERATION



Working with

All Saints CE School PTFA

fundraising for our 150th year anniversary

Your child has uploaded a mini masterpiece to our website!

VIEW NOW

by logging into the parent order portal at www.mychildsart.co.uk/order



20% of all product sales goes directly to your child's school or group

EARLY BIRD DISCOUNT FOR 2 WEEKS ONLY

Use code **AllSaints10TT25** during checkout for 10% off your order!

One use only. Excludes VAT and P&P. Valid for 2 weeks from the portal opening date, not the date that you receive this leaflet. Not automatically applied and cannot be added once an order has been confirmed.

Your final order date is

31/07/2025

so don't delay!

Username

Access Code

NB: Username and Access Code are case and space sensitive, so please be careful when entering the details into the portal.



Scan me





ALL SAINTS' NURSERY



OPENING SEPTEMBER
2025!

For more information check out our website:

[HTTPS://WWW.ALLSAINTSFED.DERBYSHIRE.SCH.UK/NURSERY/](https://www.allsaintsfed.derbyshire.sch.uk/nursery/)



+ VOLUNTEERS NEEDED



We are looking for new
committee members and
volunteers for the PTFA +



+ +
**PLEASE EMAIL US OR
SPEAK TO US IN
PERSON**

+ +
ALLSAINTSJUNIORPTFA@GMAIL.COM



Spring & Summer Menu

Available Daily:
Bread, Salad,
Fresh Fruit,
Yoghurt &
Drinking Water

Allergen Key

Celery	C	Milk	Mo
Cereals	G	Mustard	Mu
Crustaceans	Cr	Nuts	N
Eggs	E	Peanuts	P
Fish	F	Sesame Seeds	Se
Lupin	L	Soya	So
Milk	M	Sulphur Dioxide	Su

Week 1

	Monday	Tuesday	Wednesday	Thursday	Friday
The Main Event	*Meal designed by pupils at Stanley Junior School Crispy Beef Tacos with Sunshine Rice	V Creamy Tomato Lasagne G/M/Mu/So with Garlic Bread G & Side Salad	Roast of the Day with Stuffing G Mashed Potatoes M Seasonal Veg. & Gravy	Big Breakfast Sausage G/So/Se; Bacon, Hash Browns, Baked Beans & Tomatoes	Fish Fingers F/G with Chips, Carrots & Sweetcorn
Alternative Choice	Ve Quorn Dippers G in a Homemade Sauce with Sunshine Rice 	V Margarita Pizza G/M with Herb Potatoes & Side Salad	V Cauliflower & Leek Cheese Bake G/M with Mashed Potatoes M & Seasonal Veg.	Big Breakfast Veggie Sausage G with a Hash Browns, Baked Beans & Tomatoes 	V Summer Quiche E/G/M with Chips & Side Salad
Daily Choice	Pasta Pot, Filled Jacket Potato or a Sandwich meal - Please speak with your school for their selection				
Dessert	Chewy Cherry Cookie E/G 	Ice Cream M with Fruit 	Flapjack G with Fruit 	Jaffa Choc Pot M 	Strauberry Marbled Muffin E/G/M

Weeks Starting: 21.04.25 / 12.05.25 / 09.06.25 / 30.06.25 / 21.07.25 / 15.09.25 / 06.10.25

Week 2

	Monday	Tuesday	Wednesday	Thursday	Friday
The Main Event	Golden Pastry Topped Pie E/G/M with New Potatoes, Seasonal Veg. & Gravy	V Cheese & Tomato Pizza G/M with Potato Wedges & Side Salad	Pork Sausages G/So/Se with Mashed Potatoes M Seasonal Veg, Yorkshire Pudding E/G/M & Gravy	BBQ Chicken Fajita Wrap G with Sweetcorn Salsa, Oven Baked Potatoes & Seasonal Veg.	Fish Stars F/G with Chips, Baked Beans & Peas
Alternative Choice	Ve Vegan Sausage Roll G with New Potatoes, Seasonal Veg. & Gravy	Ve Tasty Katar Veg Bolognese So with Pasta G & Side Salad	Ve Vegan Sausages G with Mashed Potatoes M Yorkshire Pudding E/G/M & Gravy 	V Veggie Balls G in a Curry Sauce M with Rice	V Macaroni cheese G/M/Mu with Seasonal Veg.
Daily Choice	Pasta Pot, Filled Jacket Potato or a Sandwich meal - Please speak with your school for their selection				
Dessert	Oaty Cookie Su/G	Chocolate Pear Slice E/G 	Sprinkle Cake E/G	Strawberry Wrap M 	Scramble G with Fruit & Ice Cream M

Weeks Starting: 28.04.25 / 19.05.25 / 16.06.25 / 07.07.25 / 01.09.25 / 22.09.25 / 13.10.25

Week 3

	Monday	Tuesday	Wednesday	Thursday	Friday
The Main Event	Cheese & Bean Enchilada G/M with Mexican Rice & Salad 	Beef Burger G in a Bun G with Oven Baked Potatoes, Salad & Rainbow Slaw E/Mu	Roast of the Day with Stuffing G Mashed Potatoes M Seasonal Veg. & Gravy	Chicken Curry M served with Rice & Homemade Flatbread G/So 	Fish Fingers F/G with Chips, Carrots & Sweetcorn
Alternative Choice	V Jacket Potato with filling & Side Salad	Ve Vegan Burger G/So in a Bun G with Oven Baked Potatoes, Salad & Rainbow Slaw E/Mu 	Ve Quorn Fillet G with Stuffing G Mashed Potatoes M Seasonal Veg. & Gravy 	Ve Chinese Vegetable Chow Mein E/G/So & Homemade Flatbread G/So 	V Cheese Panini Melt G/M with Chips & Side Salad
Daily Choice	Pasta Pot, Filled Jacket Potato or a Sandwich meal - Please speak with your school for their selection				
Dessert	Chocolate Orange Cookie G	Lemon Muffin E/G	Chocolate Cracknel M/G & Fruit 	Jelly & Fruit 	Pancakes E/G/M with Fruit Coulis

Weeks Starting: 05.05.25 / 02.06.25 / 23.06.25 / 14.07.25 / 08.09.25 / 29.09.25 / 20.10.25



School calendar 2024/25



August 2024							
Wk	Mo	Tu	We	Th	Fr	Sa	Su
31				1	2	3	4
32	5	6	7	8	9	10	11
33	12	13	14	15	16	17	18
34	19	20	21	22	23	24	25
35	26	27	28	29	30	31	

September 2024							
Wk	Mo	Tu	We	Th	Fr	Sa	Su
35							1
36	2	3	4	5	6	7	8
37	9	10	11	12	13	14	15
38	16	17	18	19	20	21	22
39	23	24	25	26	27	28	29
40	30						

October 2024							
Wk	Mo	Tu	We	Th	Fr	Sa	Su
40		1	2	3	4	5	6
41	7	8	9	10	11	12	13
42	14	15	16	17	18	19	20
43	21	22	23	24	25	26	27
44	28	29	30	31			
45							

November 2024							
Wk	Mo	Tu	We	Th	Fr	Sa	Su
44					1	2	3
45	4	5	6	7	8	9	10
46	11	12	13	14	15	16	17
47	18	19	20	21	22	23	24
48	25	26	27	28	29	30	

December 2024							
Wk	Mo	Tu	We	Th	Fr	Sa	Su
48							1
49	2	3	4	5	6	7	8
50	9	10	11	12	13	14	15
51	16	17	18	19	20	21	22
52	23	24	25	26	27	28	29
1	30	31					

January 2025							
Wk	Mo	Tu	We	Th	Fr	Sa	Su
1			1	2	3	4	5
2	6	7	8	9	10	11	12
3	13	14	15	16	17	18	19
4	20	21	22	23	24	25	26
5	27	28	29	30	31		

February 2025							
Wk	Mo	Tu	We	Th	Fr	Sa	Su
5						1	2
6	3	4	5	6	7	8	9
7	10	11	12	13	14	15	16
8	17	18	19	20	21	22	23
9	24	25	26	27	28		

March 2025							
Wk	Mo	Tu	We	Th	Fr	Sa	Su
9						1	2
10	3	4	5	6	7	8	9
11	10	11	12	13	14	15	16
12	17	18	19	20	21	22	23
13	24	25	26	27	28	29	30
14	31						

April 2025							
Wk	Mo	Tu	We	Th	Fr	Sa	Su
14		1	2	3	4	5	6
15	7	8	9	10	11	12	13
16	14	15	16	17	18	19	20
17	21	22	23	24	25	26	27
18	28	29	30				

May 2025							
Wk	Mo	Tu	We	Th	Fr	Sa	Su
18				1	2	3	4
19	5	6	7	8	9	10	11
20	12	13	14	15	16	17	18
21	19	20	21	22	23	24	25
22	26	27	28	29	30	31	

June 2025							
Wk	Mo	Tu	We	Th	Fr	Sa	Su
22							1
23	2	3	4	5	6	7	8
24	9	10	11	12	13	14	15
25	16	17	18	19	20	21	22
26	23	24	25	26	27	28	29
27	30						

July 2025							
Wk	Mo	Tu	We	Th	Fr	Sa	Su
27		1	2	3	4	5	6
28	7	8	9	10	11	12	13
29	14	15	16	17	18	19	20
30	21	22	23	24	25	26	27
31	28	29	30	31			

Denotes Bank holidays
 Denotes School holiday dates
 195 days – including up to 5 days to be taken